

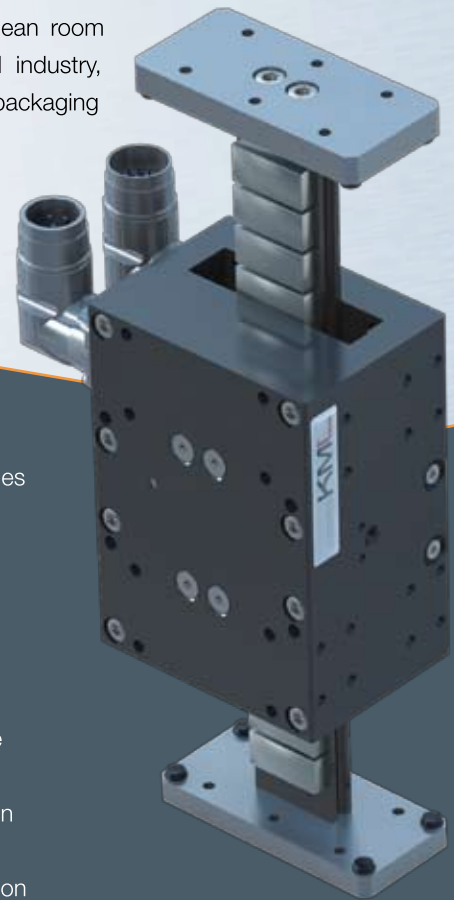


PRODUCT DESCRIPTION LMS V

The LMS V series was specially conceived for vertical applications and for the movement of small to medium loads. The compact and rigid construction ensures a constantly high position accuracy even with accelerated dynamics.

Because of the optional use of a weight compensation and a brake system, the desired position can be maintained without the use of a power engine.

Due to the optimised construction shape and the wide range of options coupled with a variety of power classes, the LMS V series is technically and economically best suited for application cases in the automation technology, general engine and plant construction, for clean room applications of the semiconductor, electronic, medical and pharmaceutical industry, print and textile industry applications as well as transfer applications and packaging machines.

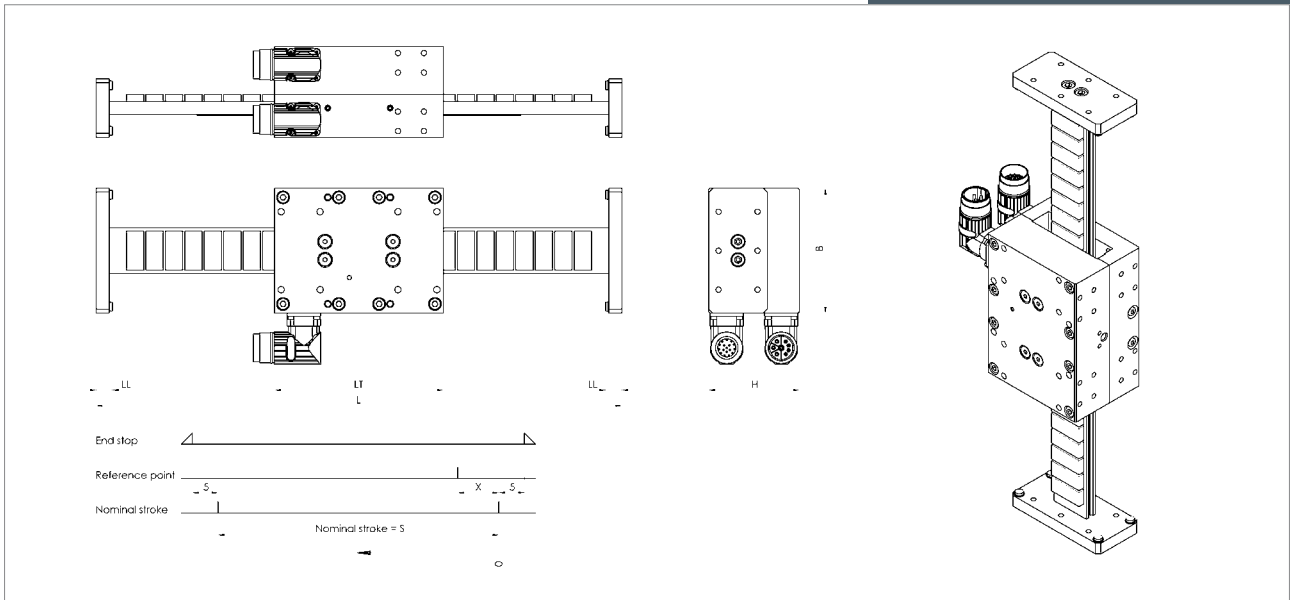


Fields of application:

- high-speed handling
- Pick & Place
- oscillators in the Hz-area
- high-frequency testing machines
- assembly applications
- test units

Features:

- optimised for vertical applications
- compact construction shape
- highest dynamics
- various protection classes as required
- clean room applications – optionally available
- hall sensor optionally available
- limit switch optionally available
- robust application
- magnetic weight compensation (optional)
- pneumatic weight compensation (optional)
- pneumatic holding brake (optional)



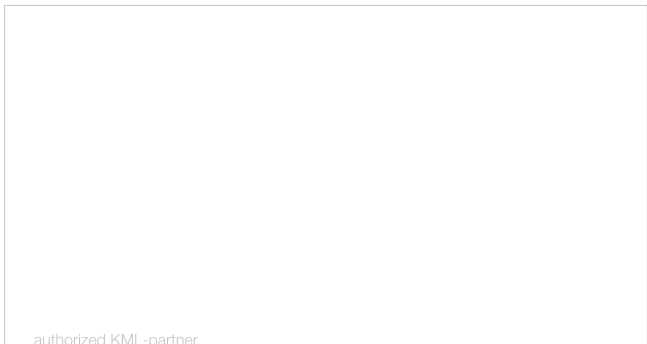
Dimensions:

construction size	width B [mm]	height H [mm]	length of the slide L [mm]	length of the end stop LL [mm]
V-10	96	70	130	12,5
V-10L	96	70	260	12,5
V-11	112	70	130	12,5
V-11L	96	70	260	12,5
V-18	180	86	130	22,0
V-18L	180	86	260	22,0
total length L [mm] = S + L + 2 x (LL + 5)				

available nominal stroke S [mm]					
50	100	150	200	300	400

Technical data:

size	continuous force [N]	peak force [N]
V-10	80	250
V-10L	160	500
V-11	150	450
V-11L	300	900
V-18	300	900
V-18L	600	1800



authorized KML-partner

Headquarters

Daumegasse 1-3, A-1100 Wien
 Telephone: +43 1 6415030 0, Fax: +43 1 6415030 50
 E-mail: office@kml.at, Web: http://www.kml.at/

Sales Austria

Daumegasse 1-3, A-1100 Wien
 Telephone: +43 1 6415030 35, Fax: +43 1 6415030 50
 E-mail: office@kml.at, Web: http://www.kml.at/

Sales Office Germany

Mauerstrasse 8, D-98527 Suhl
 Telephone: +49 3681 453789 10, Fax: +49 3681 453789 20
 E-mail: office@kml.at, Web: http://www.kml.at/

Sales Office Benelux

Visiting address: High Tech Campus 9 "Unit 005"
 5656 EA Eindhoven
 Postal address: Postbox 775, 5600 AT Eindhoven
 Telephone: +31 0 40 8517030, Fax: +31 0 40 8517039